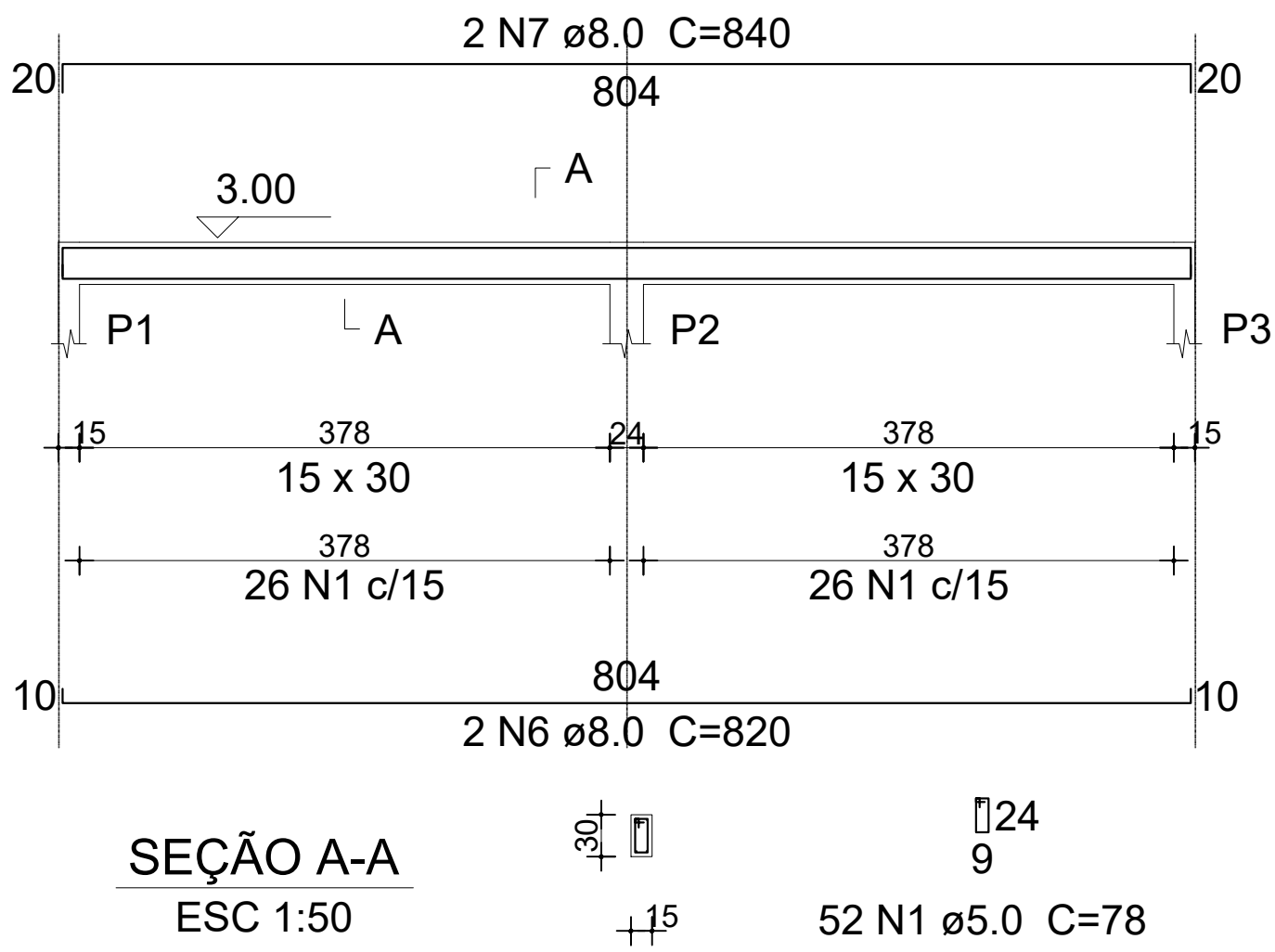


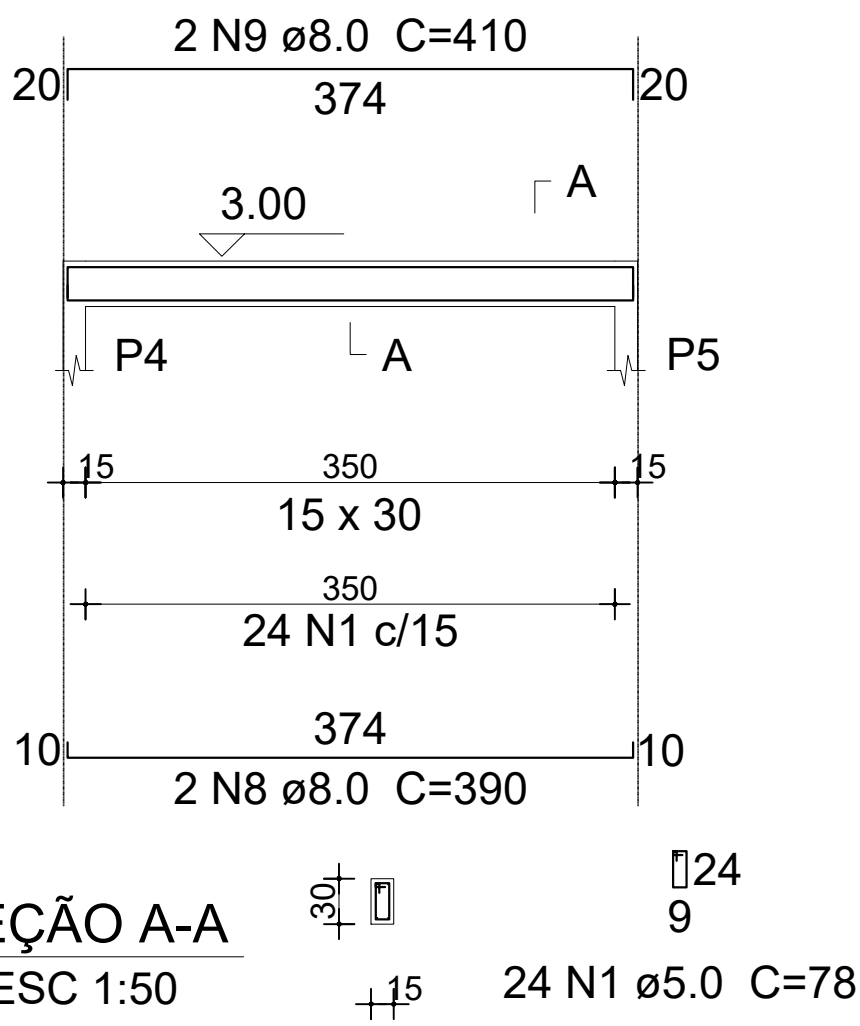
V1

ESC 1:50



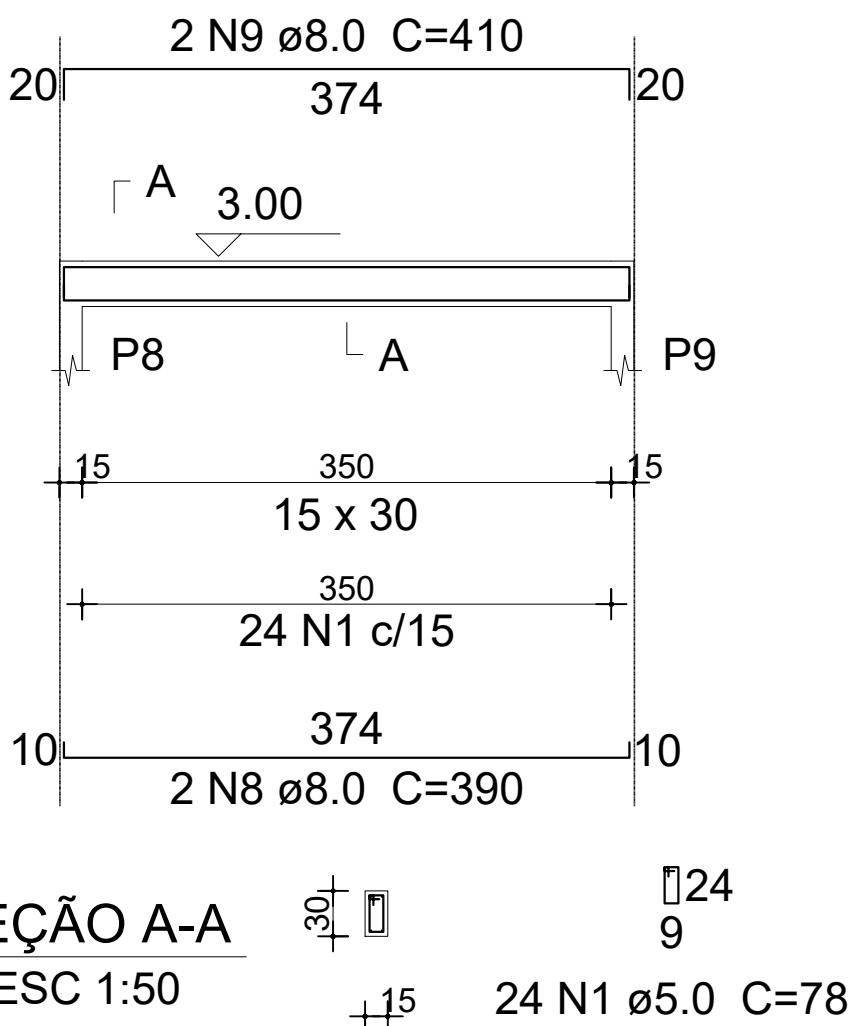
V2

ESC 1:50



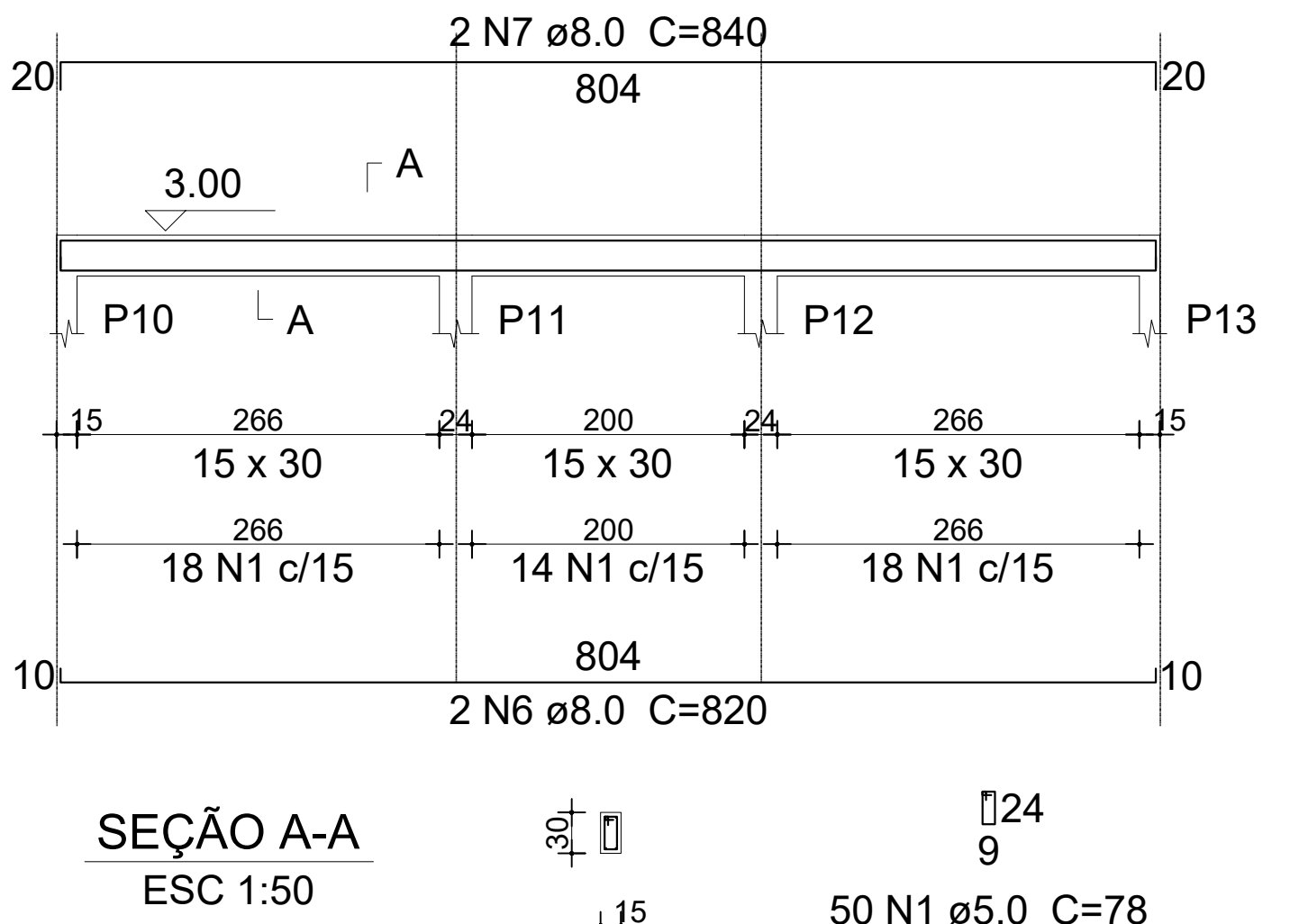
V3

ESC 1:50



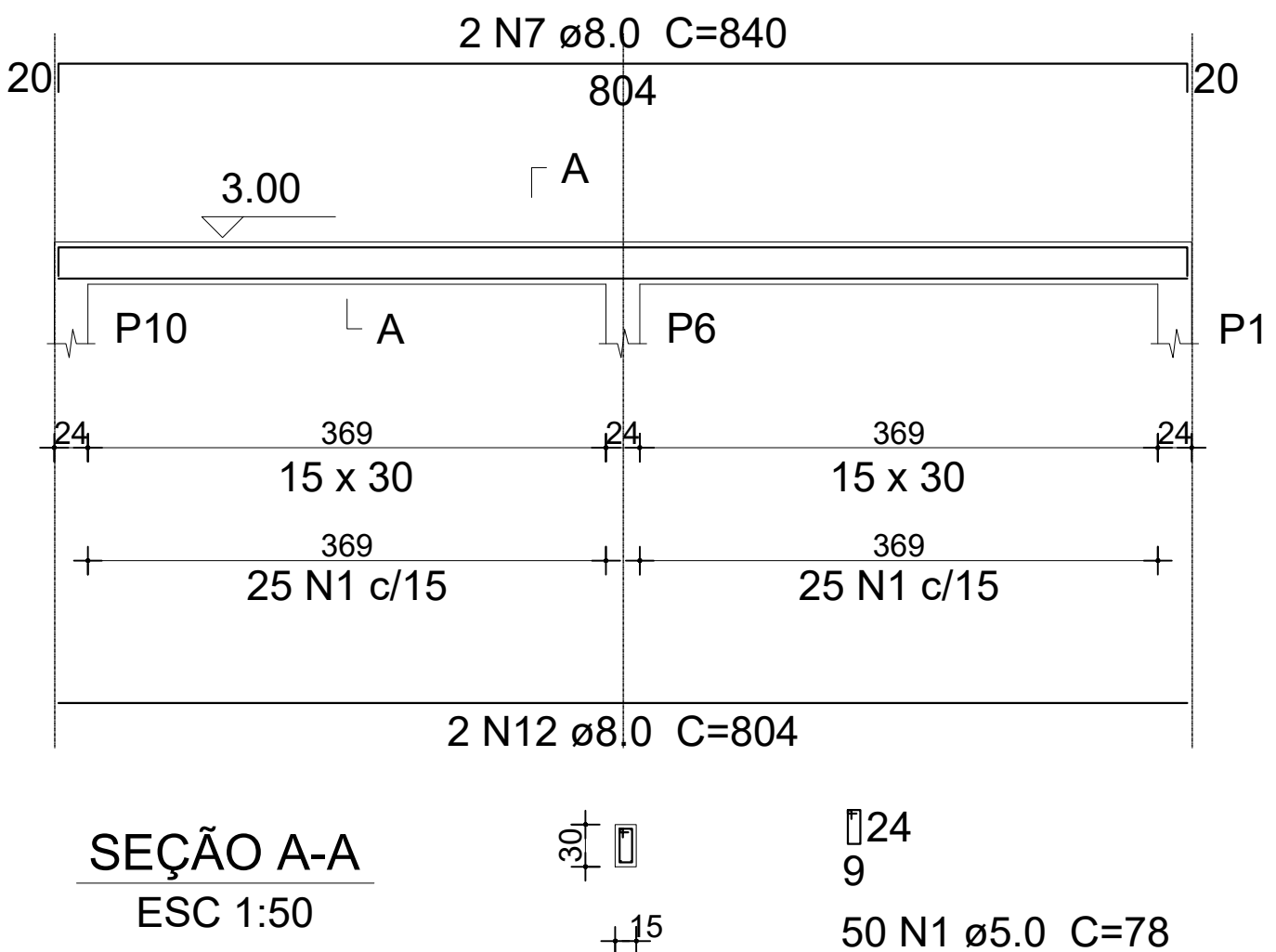
V4

ESC 1:50



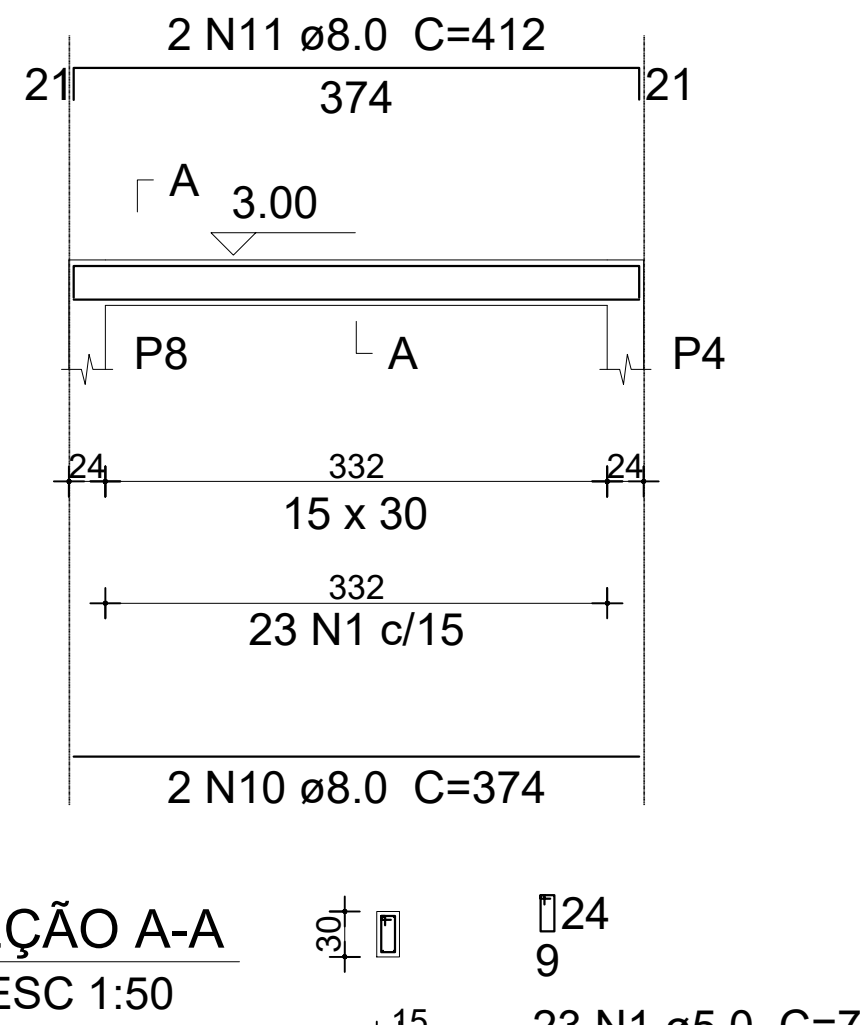
V5

ESC 1:50



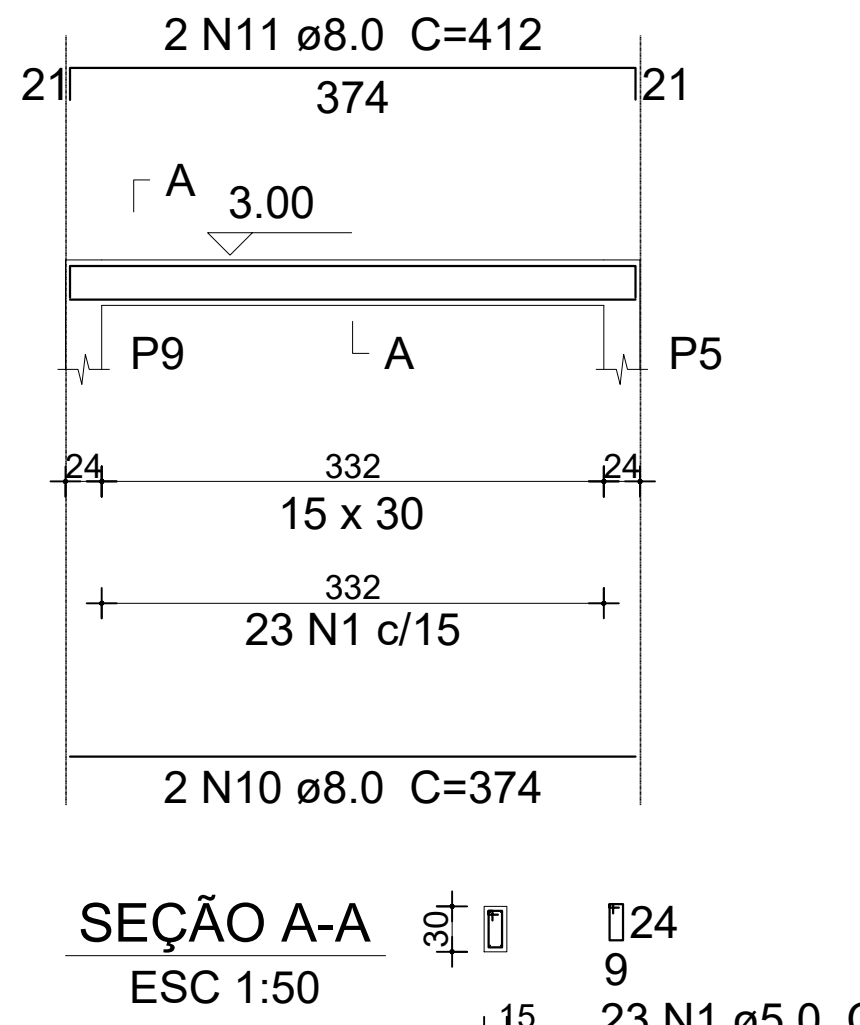
V6

ESC 1:50



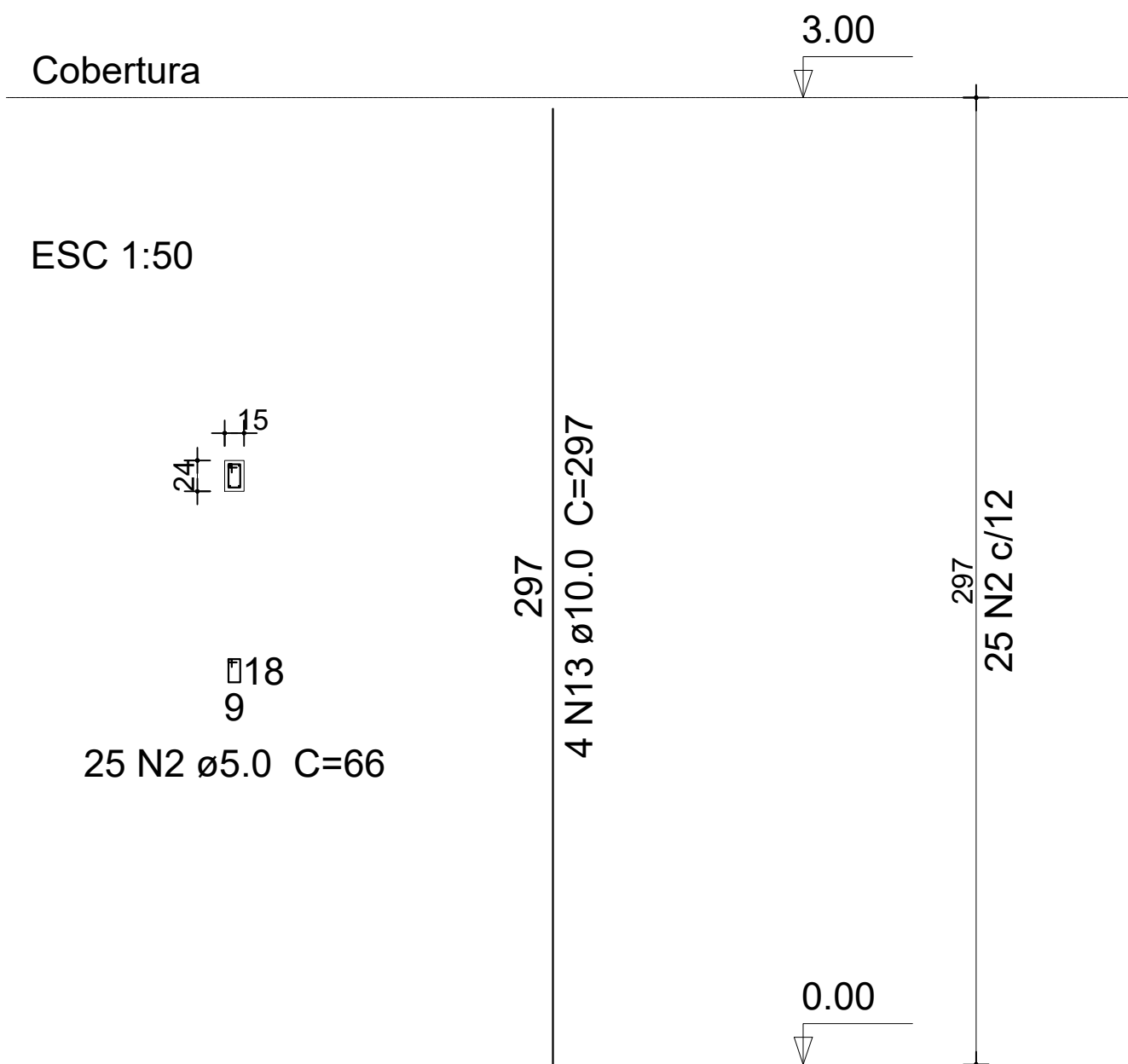
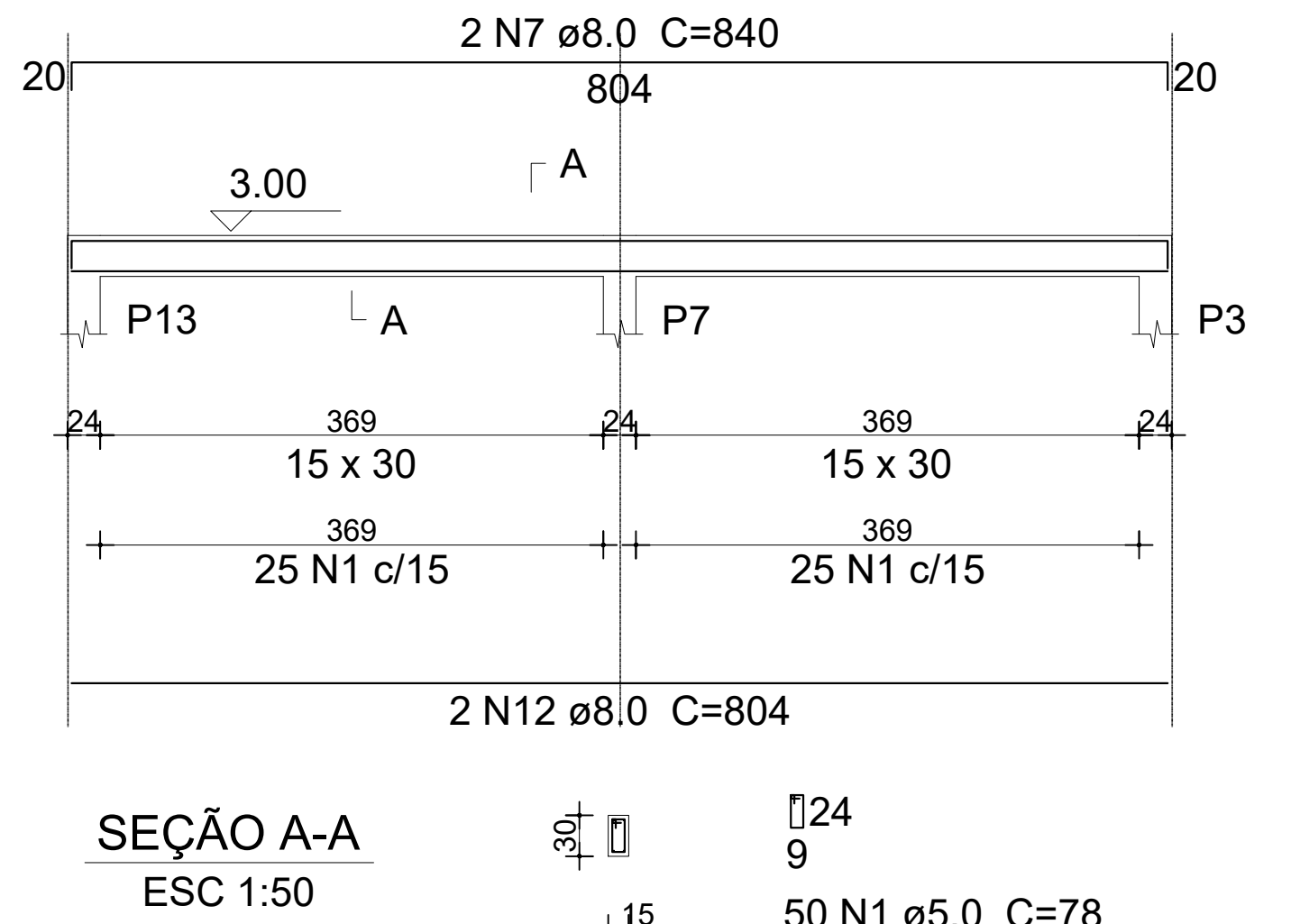
V7

ESC 1:50



V8

ESC 1:50



Relação do aço

Negativos X	Negativos Y	13xP1
V1	V2	V3
V4	V5	V6
V7	V8	

AÇO	N	DIAM (mm)	QUANT (Barras)	UNIT (cm)	C.TOTAL (cm)
CA60	1	5.0	296	78	23088
	2	5.0	325	66	21450
	3	5.0	72	63	4536
	4	5.0	8	350	2800
	5	5.0	8	365	2920
CA50	6	8.0	4	820	3280
	7	8.0	8	840	6720
	8	8.0	4	390	1560
	9	8.0	4	410	1640
	10	8.0	4	374	1496
	11	8.0	4	412	1648
	12	8.0	4	804	3216
	13	10.0	52	297	15444

Resumo do aço

AÇO	DIAM (mm)	C.TOTAL (m)	PESO + 10 % (kg)
CA50	8.0	195.6	84.9
	10.0	154.5	104.7
CA60	5.0	548	92.9
PESO TOTAL (kg)			
CA50	189.6		
CA60	92.9		

Volume de concreto (C-25) = 3.55 m³  
Área de forma = 66.12 m²

P1=P2=P3=P4=P5=P6=P7=P8=P9=P10=P11=P12=P13



**PREFEITURA MUNICIPAL DE  
PRESIDENTE OLEGÁRIO - MG**  
CNPJ: 18.602.060/0001-40  
Praça Dr. Castilho, 10 - Centro - Presidente Olegário - MG

**PROJETO ESTRUTURAL  
QUIOSQUE DA LAGOA**

CONTEÚDO:  
VIGAS RESPALDO, DETALHAS  
DOS PILARES E RESUMO DE  
AÇOS

DESENHO:  
PRAÇA MANOEL ANTONIO MARTINS  
PRESIDENTE OLEGÁRIO - MG

DATA:  
MAIO / 2023

FOLHA:  
03/03

Rhenys da Silva Cambrala  
PREFEITO MUNICIPAL DE  
PRESIDENTE OLEGÁRIO - MG

Flávio Diorgenes Cassimiro  
ENGENHEIRO CIVIL - CREA-MG: 253.500/D  
SECRETARIA DE OBRAS E SERVIÇOS PÚBLICOS

Luiz Fernando Oliveira Silva  
ENGENHEIRO CIVIL - CREA-MG: 249.506/D  
COORDENADOR DE ENGENHARIA